



Vitra Fire Station

Zaha Hadid



Zaha Hadid

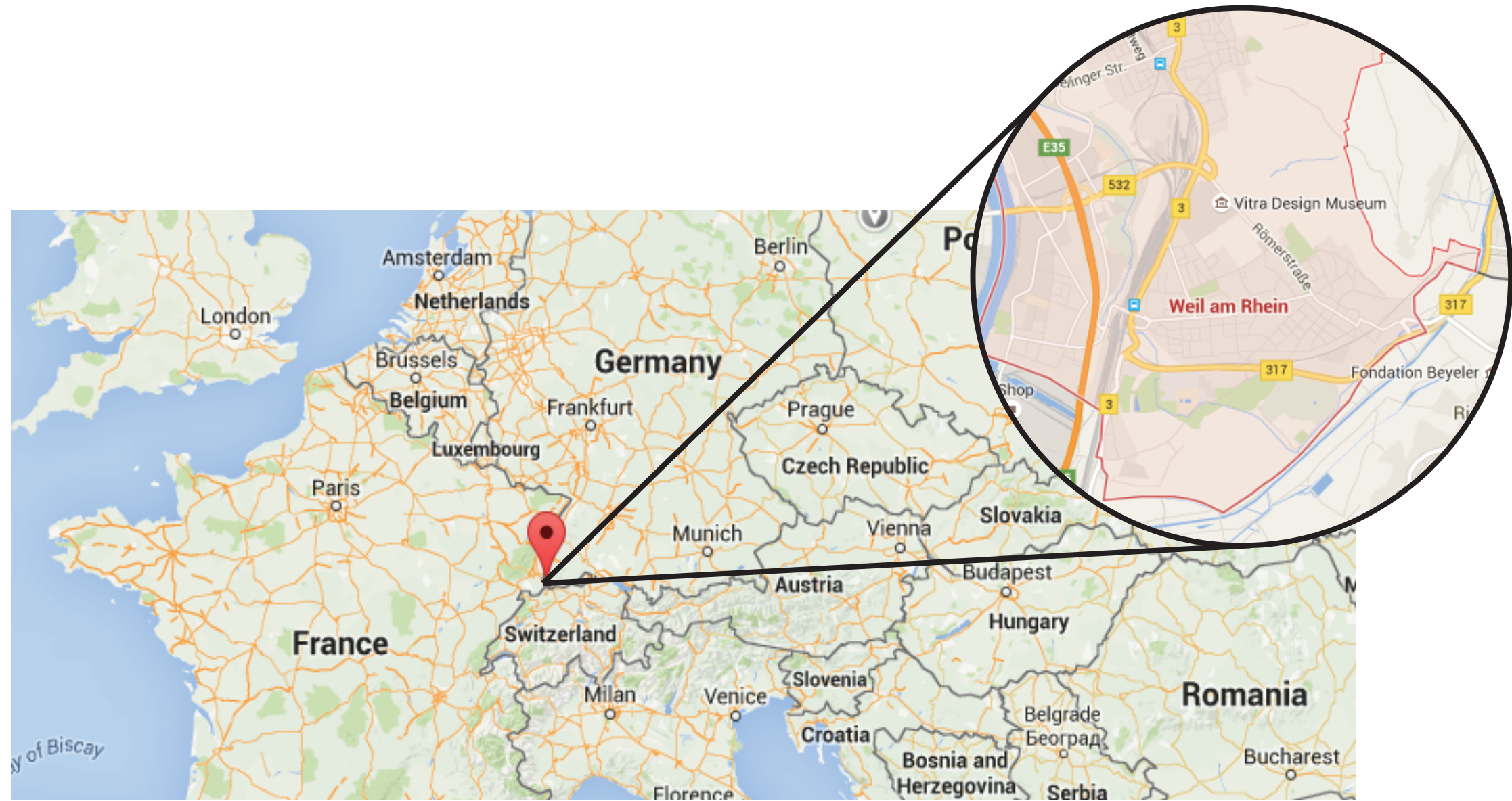
An Iraqi-British architect. Her buildings are distinctively neofuturistic, characterised by the "powerful, curving forms of her elongated structures, with "multiple perspective points and fragmented geometry to evoke the chaos of modern life".



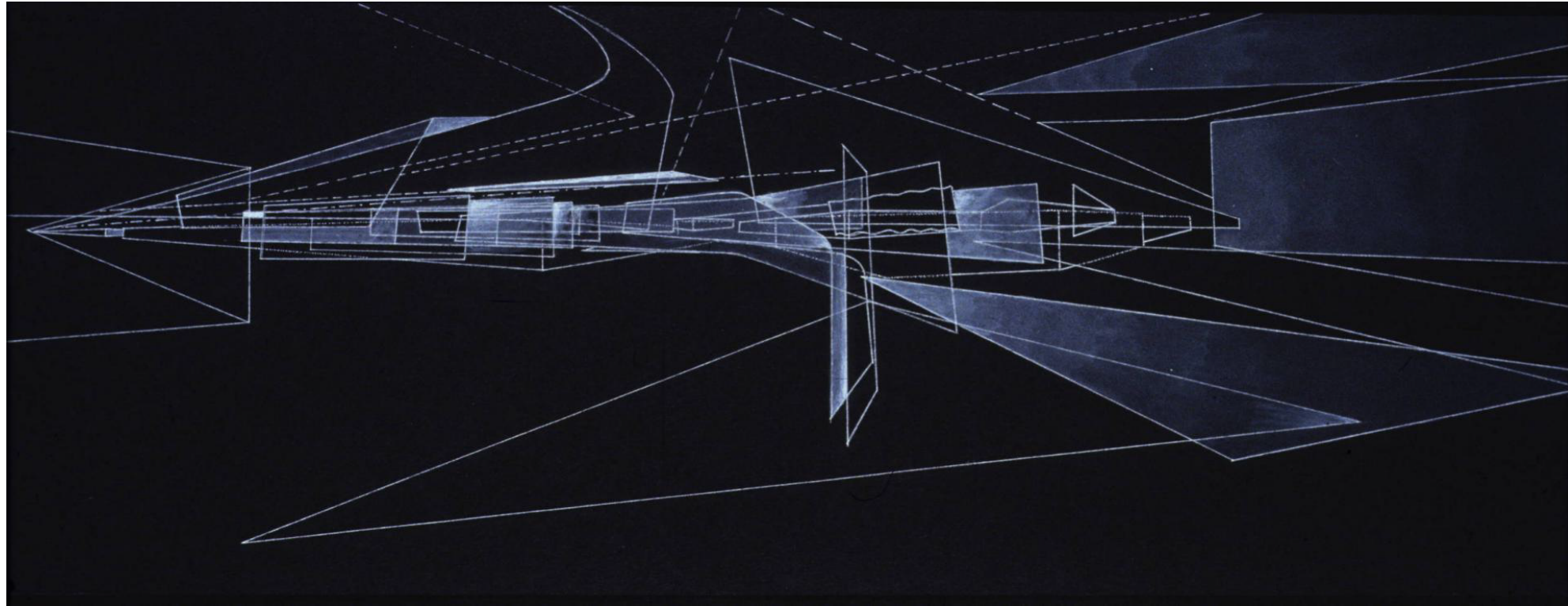
Vitra's name is associated with a new interpretation of architecture. The Fire Station was the first international design work of Zaha Hadid and demonstrates her technique of mixing polygons with triangular structures, getting a sense of movement characteristic of her designs.



The Vitra Fire Station, was built within the factory complex in order to protect all Vitra buildings after fire demonstrated the need for one, because the campus was out of the entire protected river by firefighters local. The functions were performed by workers in the same factory.



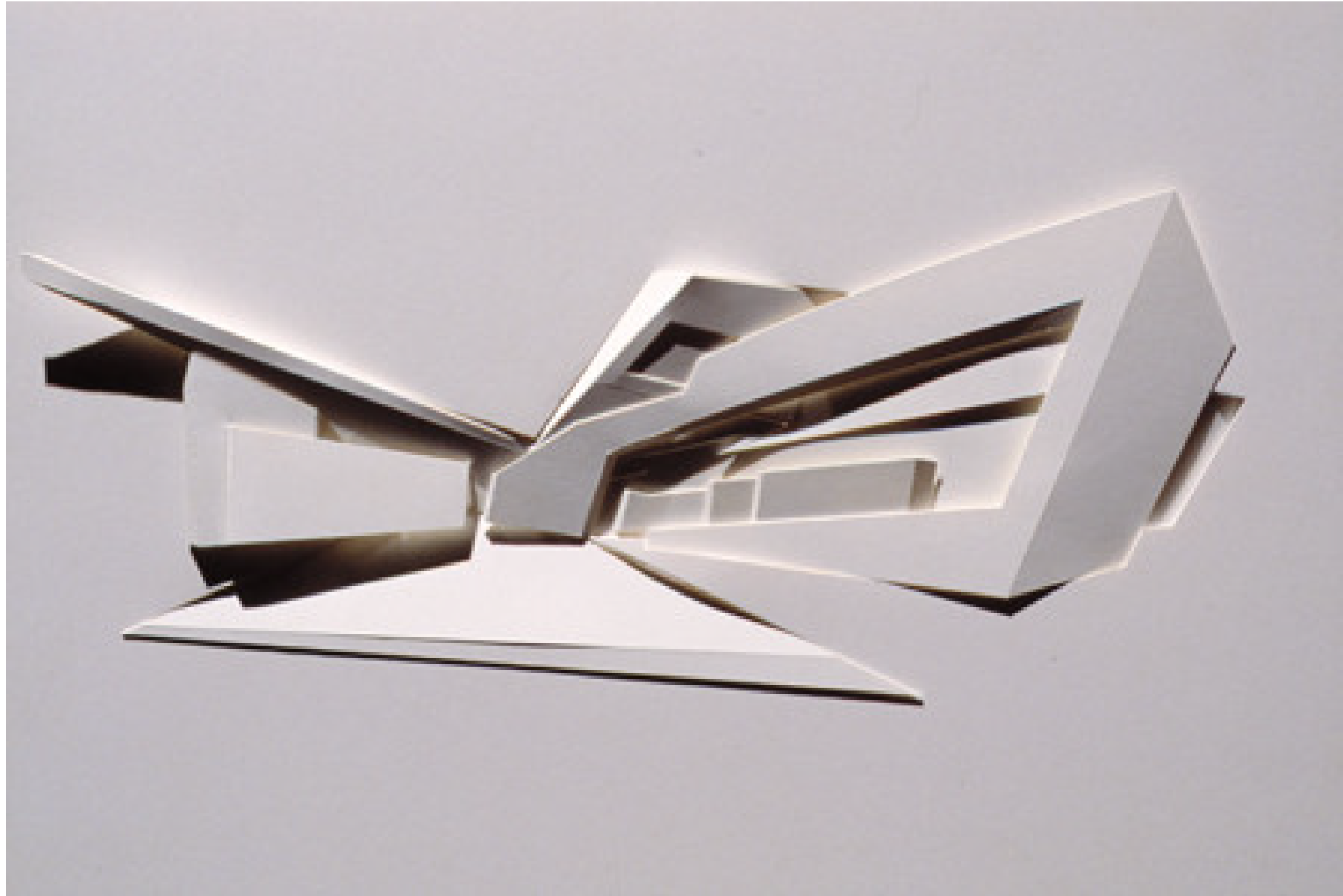
The fire station was located at the end of the street which begins in the Museum's Chair Vitra Campus in Weil am Rhein, Germany.



It was conceived as a longitudinal garden, as if it were the artificial extension of the linear patterns of the adjacent farmland and vineyards.



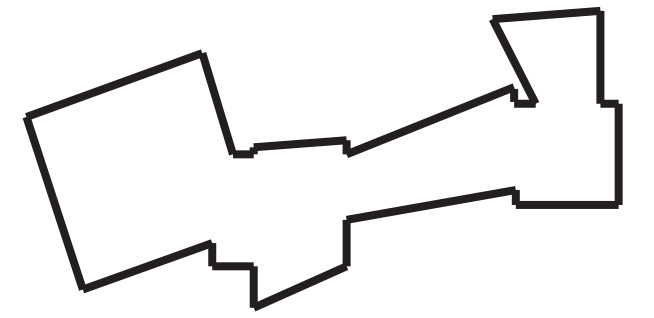
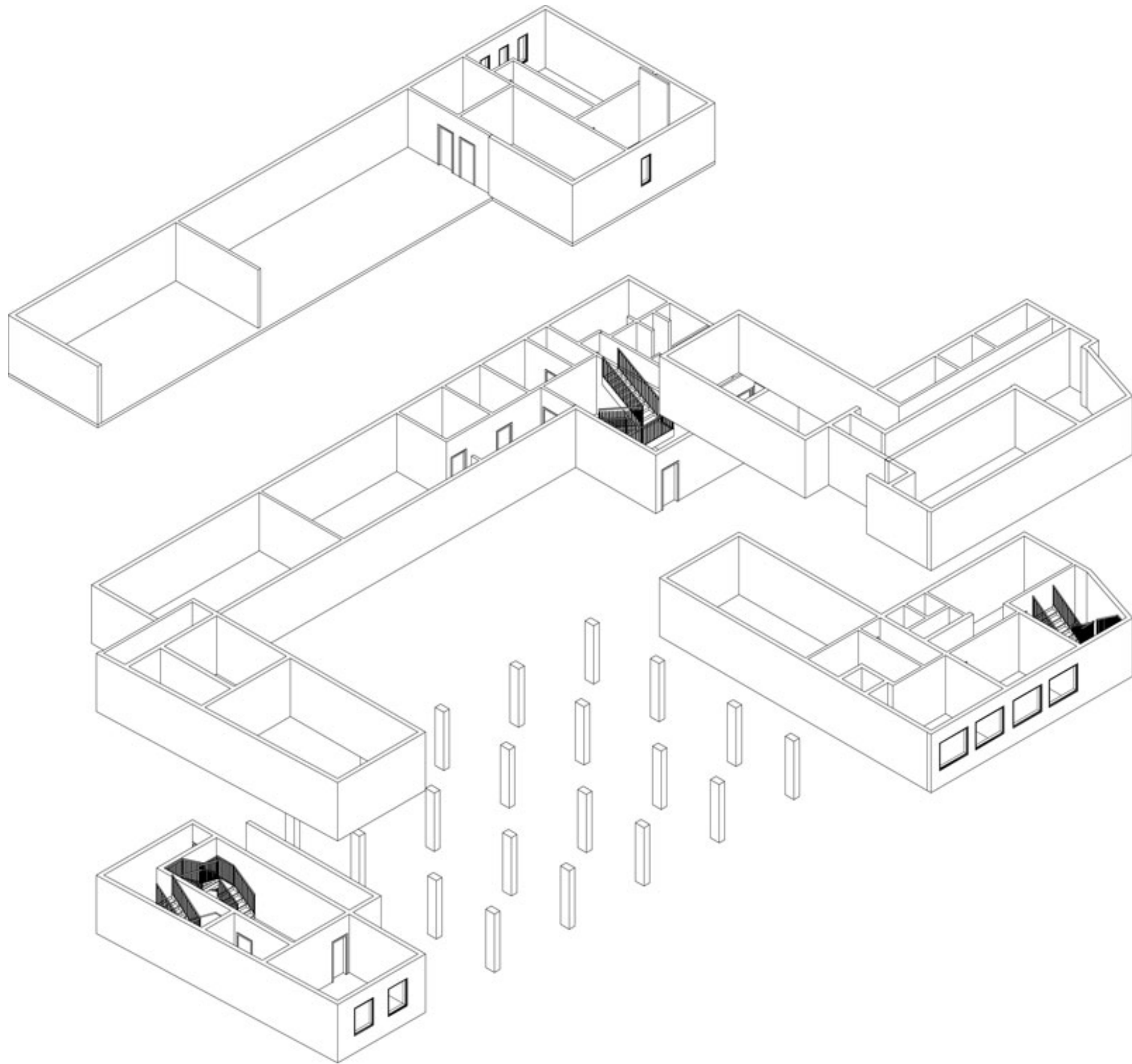
The building was not designed as an isolated object, but developed as the outer edge of the garden area, defining the space rather than occupying space. This was achieved through the provision of the program on a stretched, in a long, narrow building next to the road that marks the edge of the factory. Space, defining and accommodating the functions of the building, was the starting point for the development of architectural concept, a linear series and stratified.



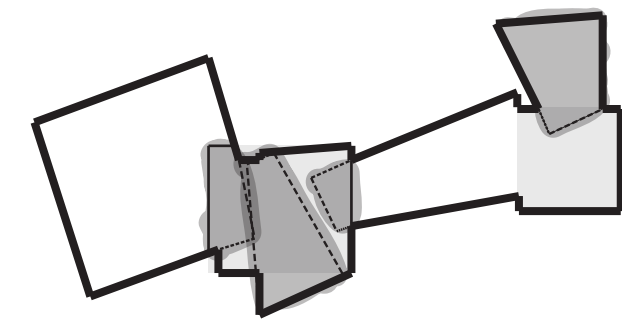
Blades or wedges are concrete walls and roof pitch in new directions give a strong sense of the dynamism of this reinforced concrete structure was created based on walls, in spaces arise.



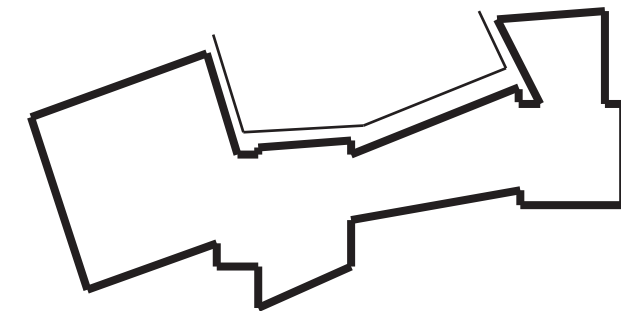
The whole building is constructed with reinforced concrete in situ in the light, avoiding any added that distort the simplicity of its prismatic form and the abstract quality of the architectural concept, paying particular attention to the sharpness of the edges. The lack of detail was also applied on the inside, rough opening frames, polished aluminum sliding planes that close the garage area, guard rails or lighting design, maintaining a consistent language that gives meaning to the whole.



Program Zone



Spatial Area



Outdoor Space

