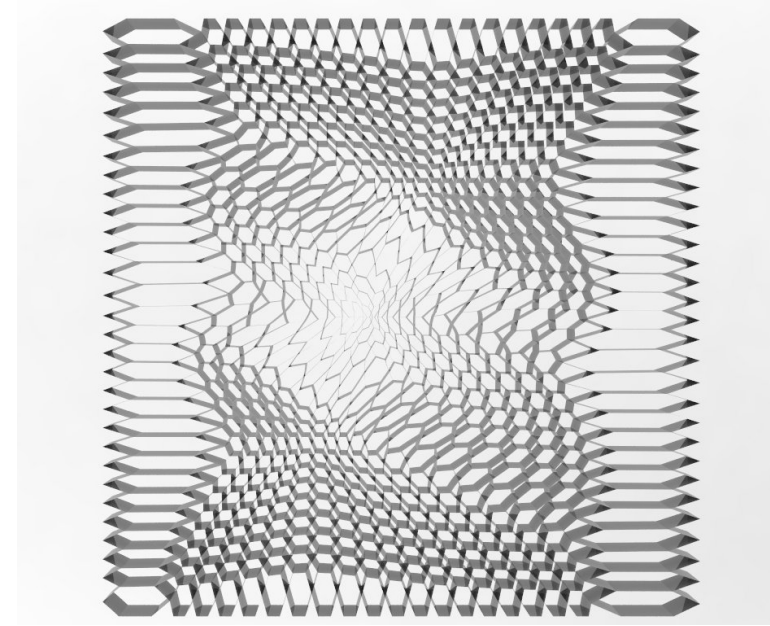
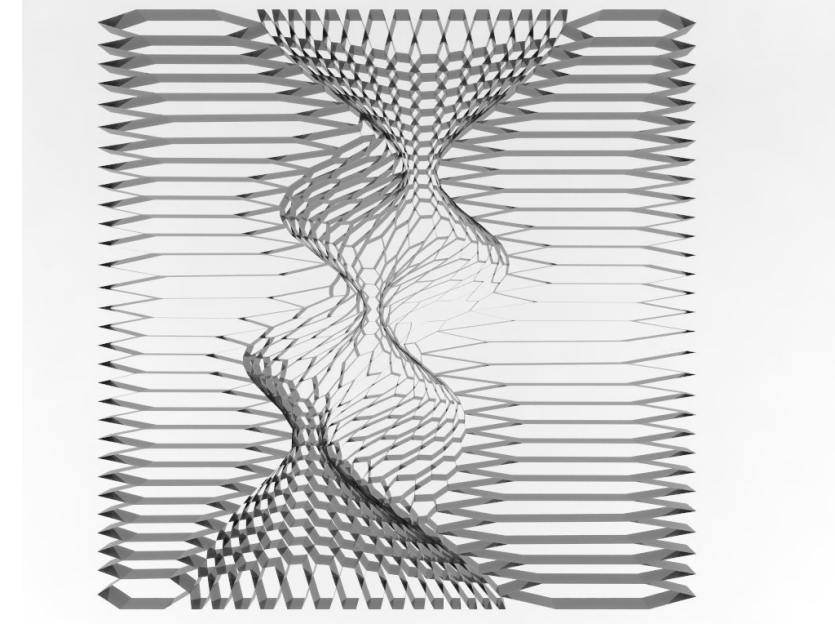


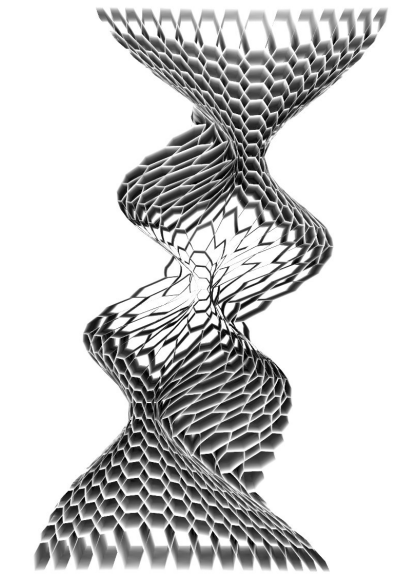
01 POTENTIAL: Process
OPERATIONS: Grasshopper



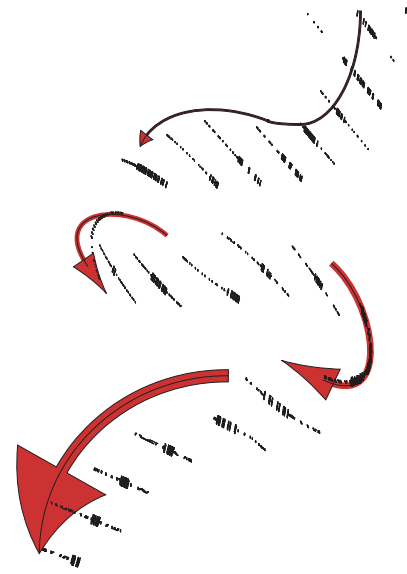
02 POTENTIAL: Process
OPERATIONS: Grasshopper



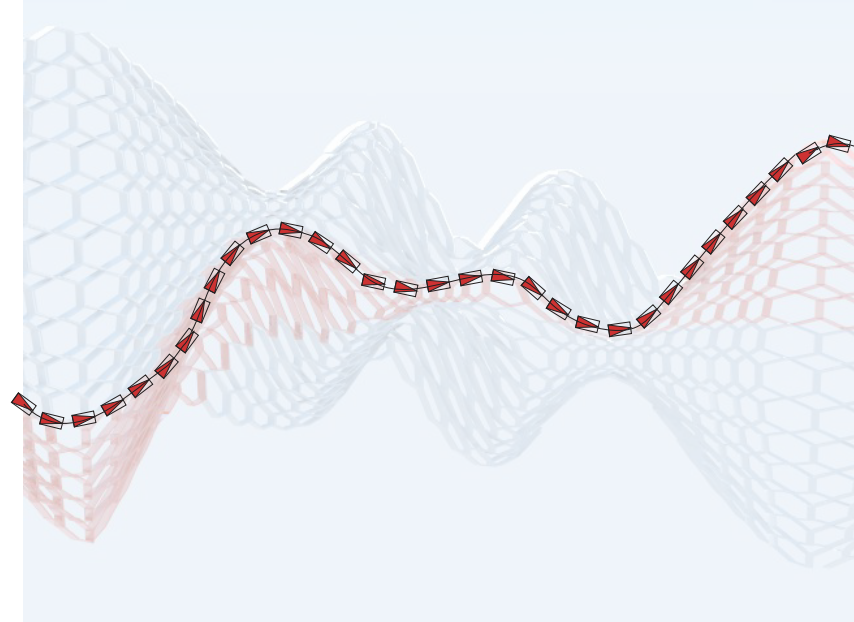
03 POTENTIAL: Process
OPERATIONS: Grasshopper



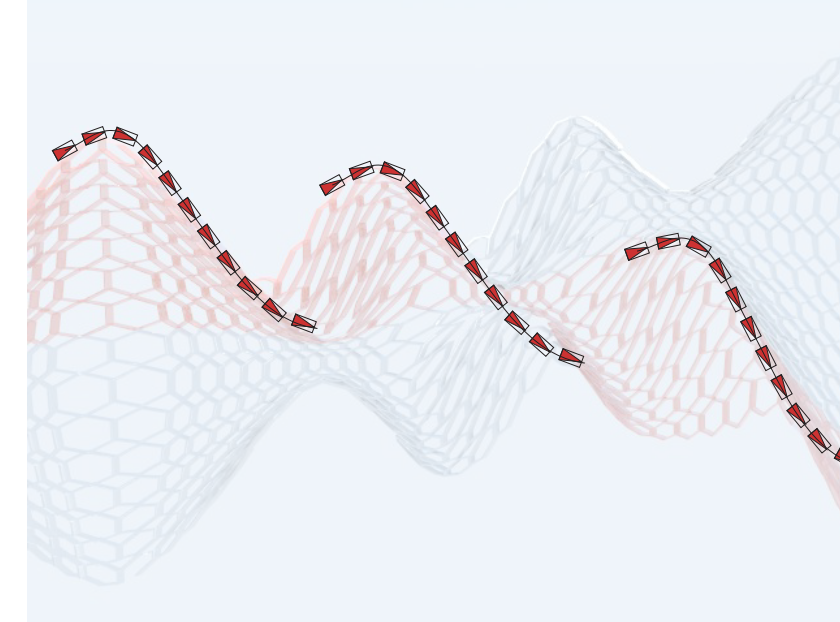
04 POTENTIAL: Process (original Unit)
OPERATIONS: Grasshopper



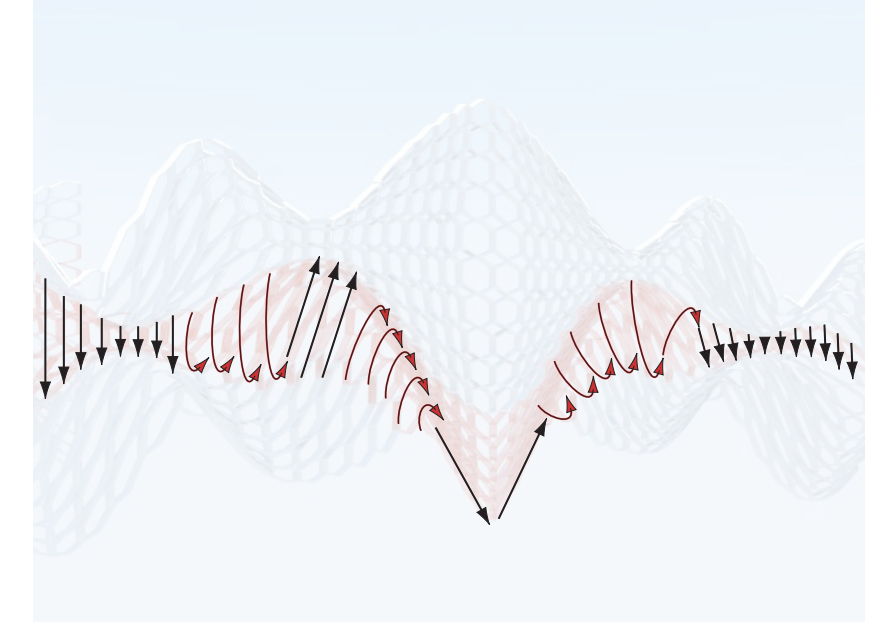
05 POTENTIAL: Movement
OPERATIONS: Contour



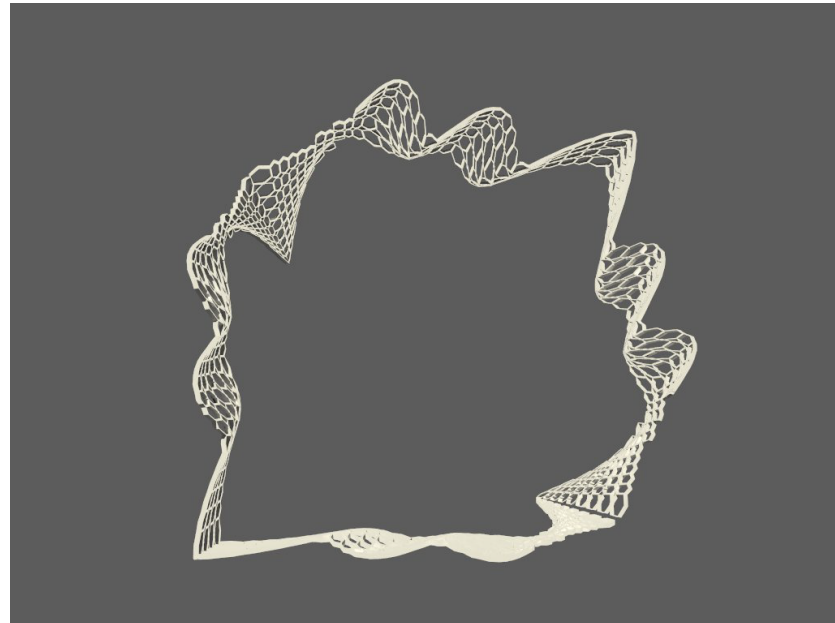
06 POTENTIAL: Secondary pattern flow
OPERATIONS: Detail view render



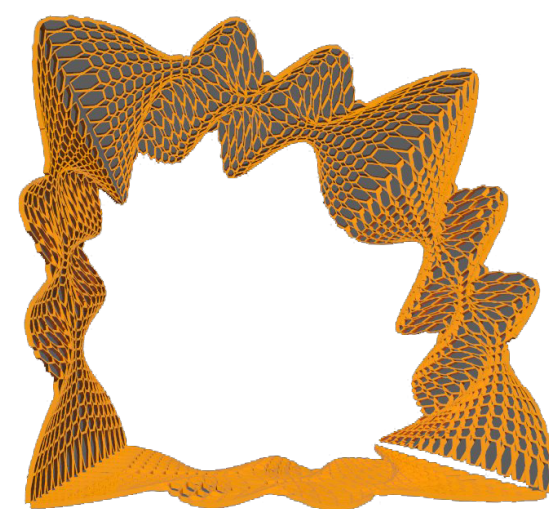
07 POTENTIAL: Secondary pattern flow
OPERATIONS: Detail view render



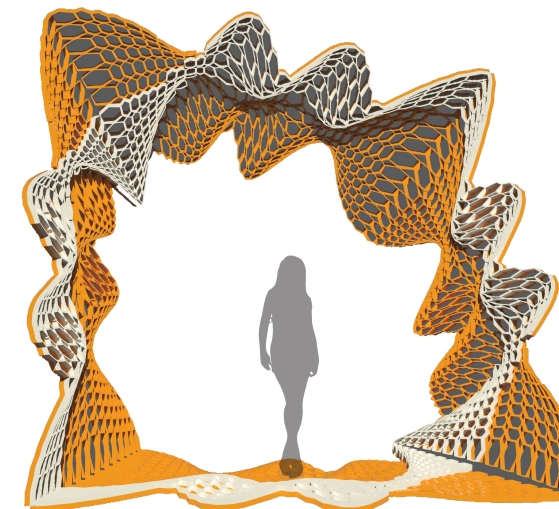
08 POTENTIAL: Twisting direction
OPERATIONS: Detail view render



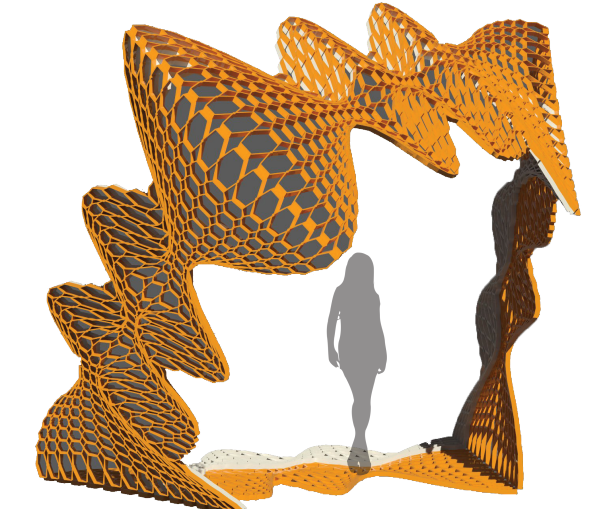
09 POTENTIAL: Top inner structure
OPERATIONS: Front view render



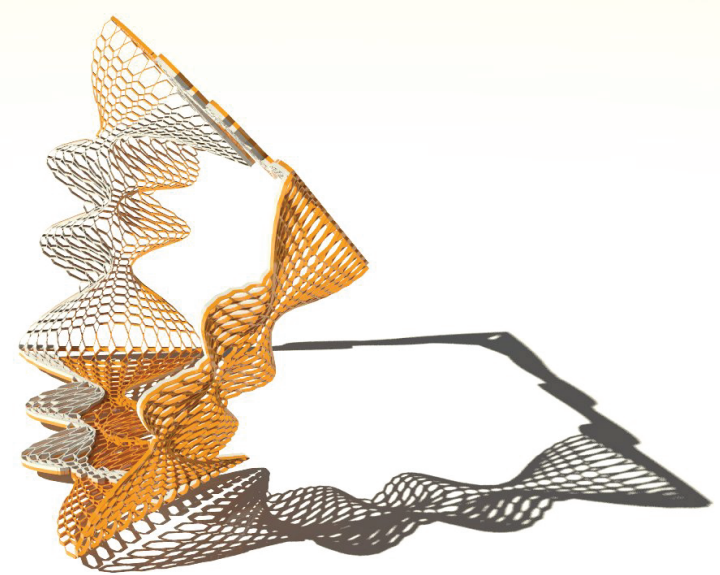
10 POTENTIAL: Top outer structure
OPERATIONS: Front view render



11 POTENTIAL: Interior flow
OPERATIONS: Front view render



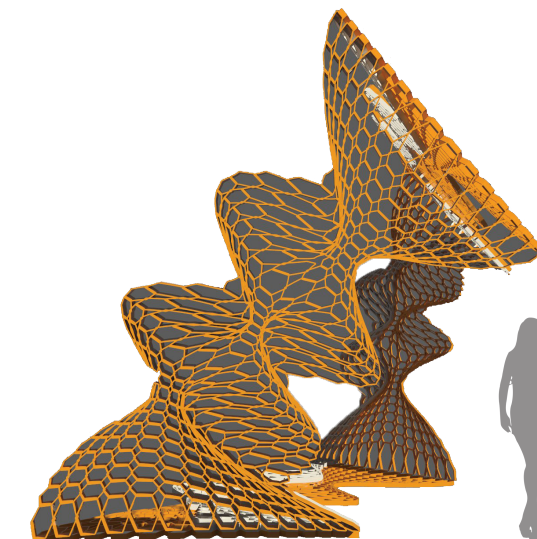
12 POTENTIAL: Exterior flow
OPERATIONS: Back view render



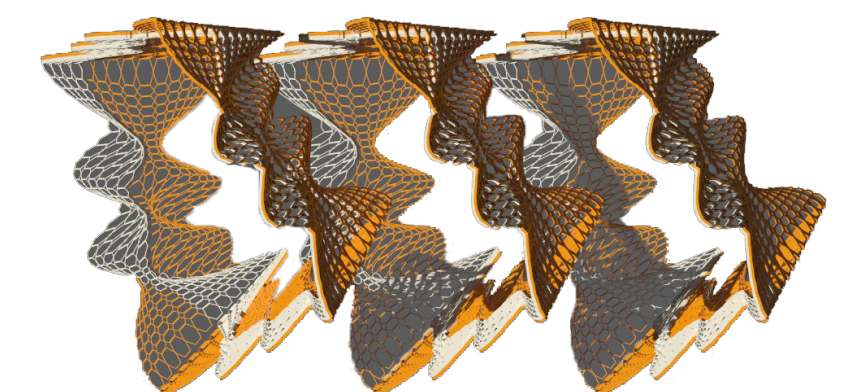
13 POTENTIAL: Shadow
OPERATIONS: Perspective view render



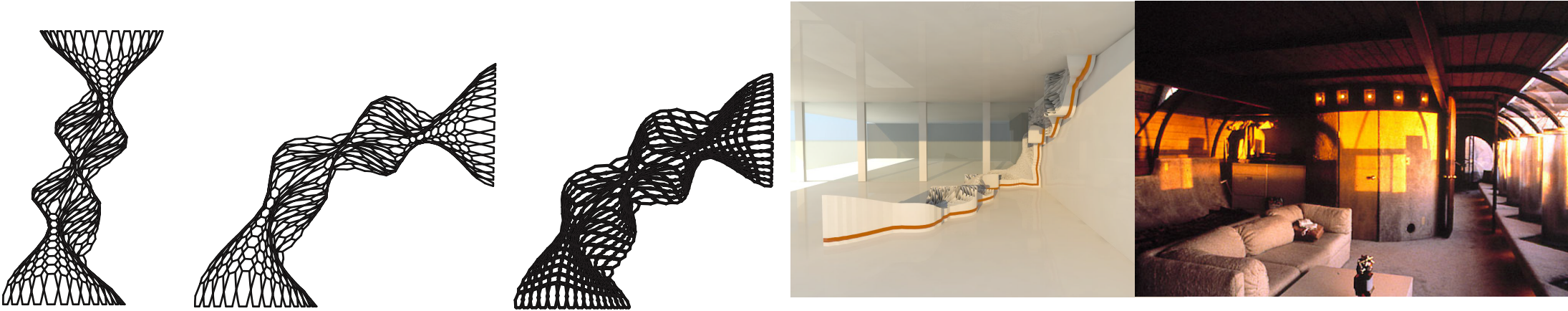
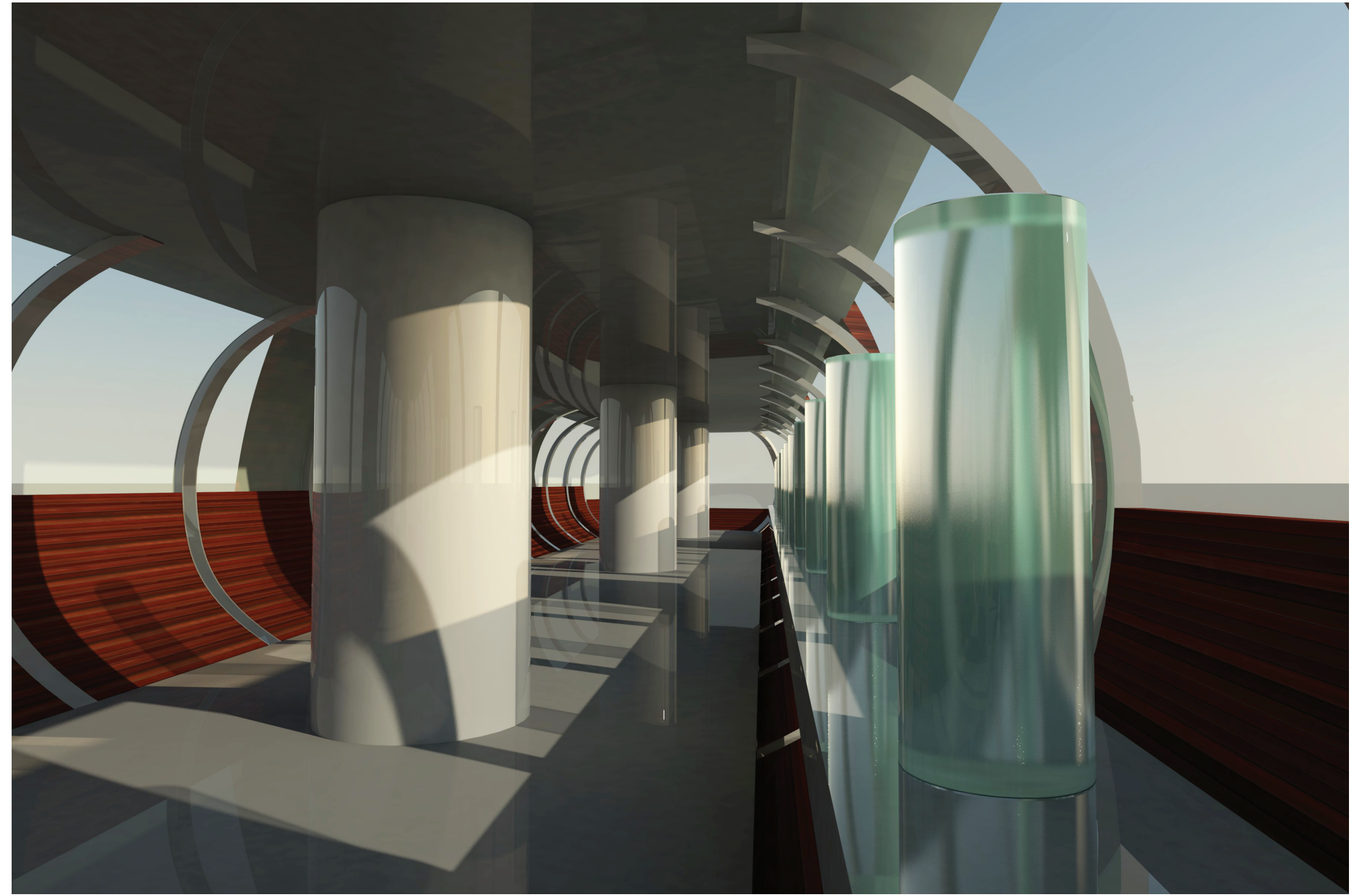
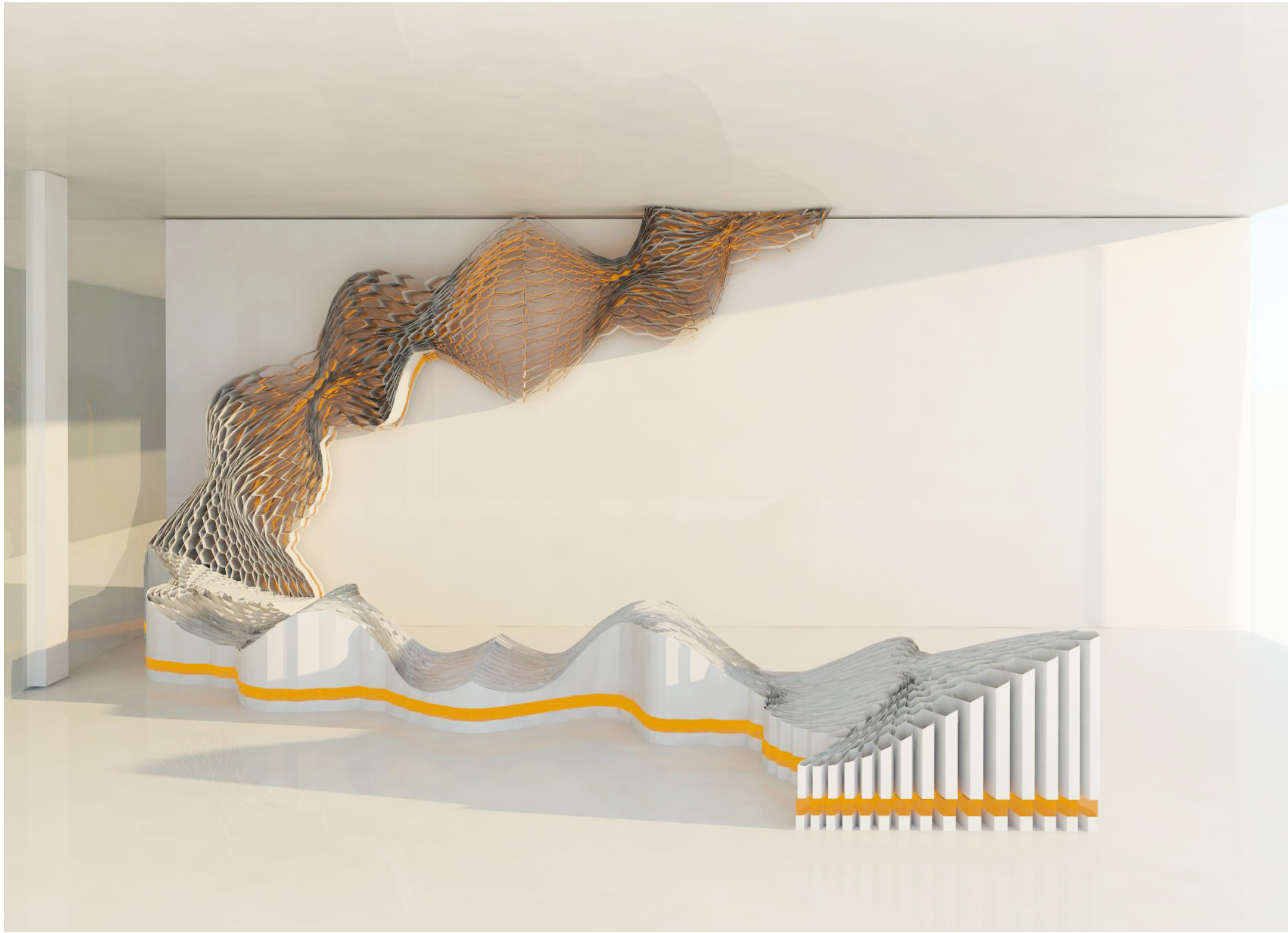
14 POTENTIAL: Elevation
OPERATIONS: Left view render



15 POTENTIAL: Elevation
OPERATIONS: Right view render



16 POTENTIAL: Combination
OPERATIONS: Top view render



- Form: Balance, the architecture appear as a equal shaped form.
- Space: Rotate, the main elements of design.
- Materiality: Reflective, the use of acrylic reflecting light in the space.
- Circulation: Continuation, the circulation path is along the inner space.
- Other: Twist, irrigation of pattern.

Description:
 The installation was inspired by Bart prince's studio project; the repetitions of design element and the rotate atmosphere lead my thoughts through this project. I want to represent the atmosphere of lightness, flowing, and twisting. The unit is a 2D piece hanging down from the ceiling, and it would be able to bend to create a 3 dimensional space. The material is wood base and spray in color: the white color shows the main pattern flowing in the structure, and the gold color shows the secondary and supporting piece. Then I line up 3 units, like the water column in Bart Prince studio, to show the irrigation.

